

# Thrilling Chase

Ur Unravel

Frida Johansson/Henrik Oja

Arr: Annie Lönngren

♩ = 80

Sopran

Alt

Tenor

Bas 1

Bas 2

*Avsnittet spelas med läckande blåsljud*

4

S

A

T

B1

B2

*Avsnittet spelas med läckande blåsljud*

7

S  
A  
T  
B1  
B2

*Avsnittet spelas med läckande blåsljud*

Detailed description: This system contains measures 7, 8, and 9. The vocal parts (Soprano, Alto, Tenor) have a melodic line with eighth notes and rests. The Alto part has a dense sixteenth-note accompaniment. The Tenor part has a rhythmic pattern of eighth notes with accents. The Bass 1 part has a simple bass line with quarter notes. The Bass 2 part has a rhythmic pattern of eighth notes with accents. The key signature has two flats (B-flat and E-flat), and the time signature is 4/4. A performance instruction in Swedish is placed between the Tenor and Bass 1 staves.

10

S  
A  
T  
B1  
B2

Detailed description: This system contains measures 10, 11, and 12. The vocal parts continue their melodic lines. The Alto part maintains its sixteenth-note accompaniment. The Tenor part continues its eighth-note rhythmic pattern. The Bass 1 part has a simple bass line. The Bass 2 part has a rhythmic pattern of eighth notes. The key signature and time signature remain the same as in the previous system.

13

S  
A  
T  
B1  
B2

Detailed description: This system contains measures 13, 14, and 15. The vocal parts continue their melodic lines. The Alto part maintains its sixteenth-note accompaniment. The Tenor part continues its eighth-note rhythmic pattern. The Bass 1 part has a simple bass line. The Bass 2 part has a rhythmic pattern of eighth notes. The key signature and time signature remain the same as in the previous system.

16

S  
A  
T  
B1  
B2

This system contains measures 16, 17, and 18. The vocal parts (Soprano, Alto, Tenor) and piano accompaniment (B1, B2) are shown. Measure 16 features a vocal line with eighth notes and rests, and a piano accompaniment with eighth-note patterns. Measure 17 continues the vocal line with eighth notes and rests, and the piano accompaniment with eighth-note patterns. Measure 18 concludes the system with a vocal line ending in a rest and a piano accompaniment with eighth-note patterns.

19

S  
A  
T  
B1  
B2

This system contains measures 19, 20, and 21. The vocal parts and piano accompaniment are shown. Measure 19 features a vocal line with eighth notes and rests, and a piano accompaniment with eighth-note patterns. Measure 20 features a vocal line with eighth notes and rests, and a piano accompaniment with eighth-note patterns. Measure 21 concludes the system with a vocal line ending in a rest and a piano accompaniment with eighth-note patterns.

22

S  
A  
T  
B1  
B2

This system contains measures 22, 23, and 24. The vocal parts and piano accompaniment are shown. Measure 22 features a vocal line with eighth notes and rests, and a piano accompaniment with eighth-note patterns. Measure 23 features a vocal line with eighth notes and rests, and a piano accompaniment with eighth-note patterns. Measure 24 concludes the system with a vocal line ending in a rest and a piano accompaniment with eighth-note patterns.

# Thrilling Chase

Ur Unravel

Sopran

Frida Johansson/Henrik Oja

Arr: Annie Lönngren

♩ = 80



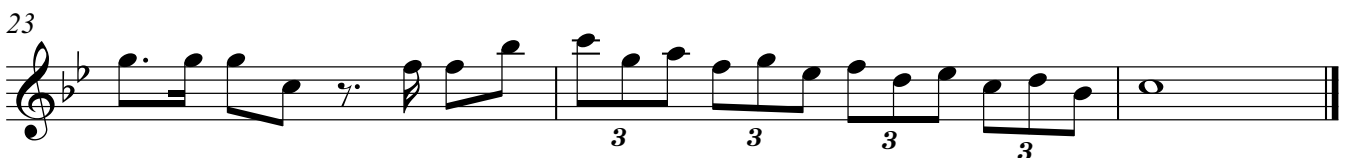
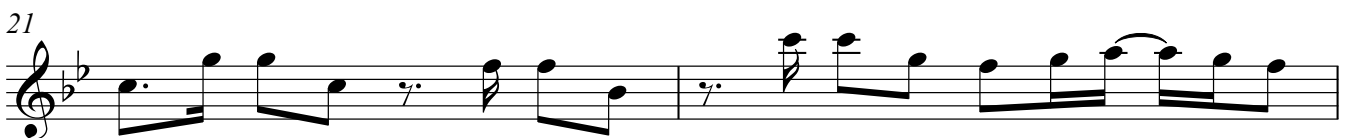
# Thrilling Chase

Ur Unravel

Alt

Frida Johansson/Henrik Oja  
Arr: Annie Lönngren

$\text{♩} = 80$



# Thrilling Chase

Tenor

Ur Unravel

Frida Johansson/Henrik Oja

Arr: Annie Lönngren

$\text{♩} = 80$



9 *Avsnittet spelas med  
läckande blåsljud*



13



17



21



# Thrilling Chase

Ur Unravel

Bas 1

$\text{♩} = 80$

*Avsnittet spelas med  
läckande blåsljud*

Frida Johansson/Henrik Oja

Arr: Annie Lönngren



Bas 2

# Thrilling Chase

Ur Unravel

Frida Johansson/Henrik Oja

Arr: Annie Lönngren

*Avsnittet spelas med  
läckande blåsljud*

♩ = 80

